

Examples of application of eviXscan 3D scanners



Reverse Engineering | Rapid Prototyping | Creating of CAD documentation



automotive

LOSTER - 3D scanning of motorcycles parts

Loster company specializes in designing and production of glasses and tuning elements for a wide range of motorcycles. The new components are designed by the company by use of the **eviXscan 3D scanner** which supports the production process.

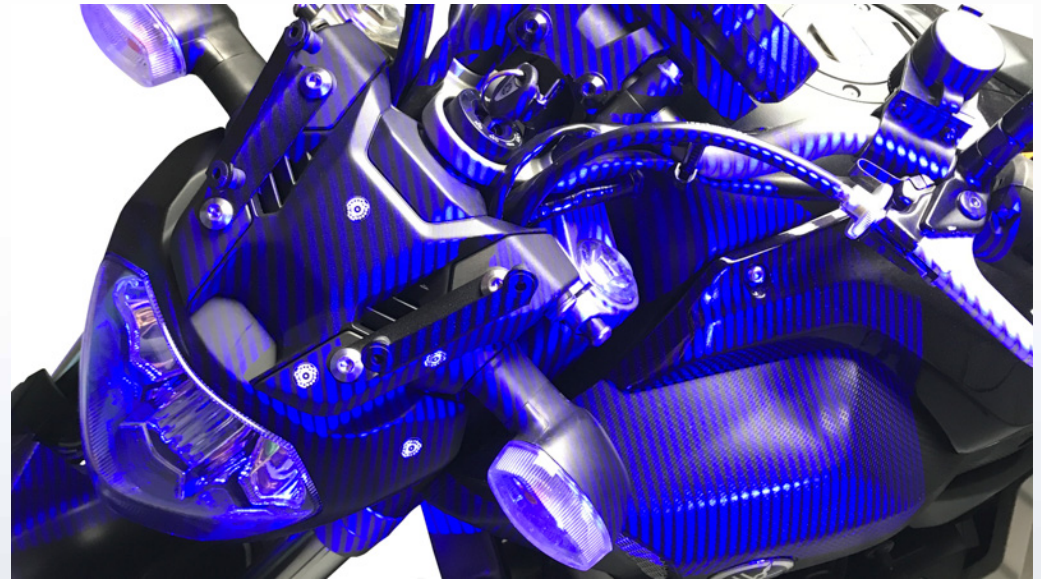
Reverse engineering

Thanks to **3D scanning** and implementation of the **eviXscan 3D solutions**, the company has gained a tool enabling it to constantly expand its offer with production of additional or missing equipment elements for motorcycles, such as covers, fairings or mudguards.

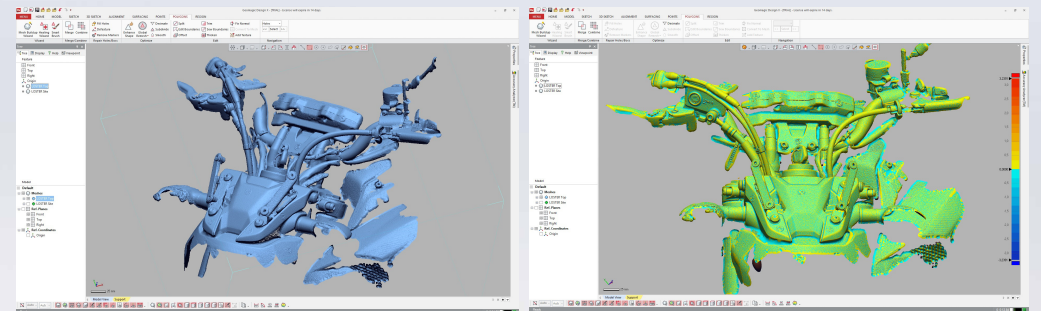
In the product development process, to provide quality conforming to the original part, it is necessary to recreate the geometry of the original parts. For this purpose, the shape of a motorcycle element which the customer wishes to modify or which misses a particular element is scanned. Next, based on the **3D scan**, a CAD model is created which is then modified according to the customer's guidelines or as assumed by the Loster company designers.

Rapid prototyping

The prototype is made directly from the CAD file using a 3D printer, which significantly shortens the production process and lowers its cost.



Loster is the only company in Poland using the **eviXscan 3D scanner** for reconstruction of fairings which are no longer available on the market. The company also specializes in implementation of individual projects of the most demanding customers.



Application of the **3D scanning technology** using the **eviXscan 3D scanner** significantly shortens the whole production process and improves its quality, furthermore, it increases the repeatability and enables easy editing of the prepared models.